



EAGLEWOOD[®]
resort & spa

2025 - 2026

GROUPS



CONTENTS

03	ABOUT
04	ACCOMMODATIONS
06	MEETINGS
07	CONFERENCE CENTER
08	MEETING PACKAGES
09	MEETING ROOMS
11	CAPACITIES & DIAGRAMS
15	DINING
16	GOLF
17	THE SPA
18	ACTIVITIES
20	UNIQUE TEAM BUILDING
21	LOCATION / CONTACT



■ ■ ABOUT

Eaglewood offers state-of-the-art conference and event facilities, outstanding culinary and planning staff, and unique on-site recreation in a relaxed and inspiring natural setting.

Situated among 106 wooded acres close to Downtown Chicago and O'Hare International Airport, Eaglewood is designed in the spirit of Frank Lloyd Wright's Prairie style. The resort is an exceptional setting for conferences and special occasions, with first class facilities, amenities, and service that inspire a perfect mix of productivity and relaxation.





295 GUESTROOMS

10 STUDIO SUITES

6 PENTHOUSES

■ ■ GUEST ROOMS AND SUITES

Eaglewood's beautifully designed guest rooms have everything you need to dig into work or sit back and relax. Perfect your presentation notes at the oversized desk; step out onto the balcony to enjoy the golf-course view; ease into the comfortable seating area for some HDTV.

Experience panoramic golf course views, prairie-style décor, and plenty of room to stretch out. Eaglewood's guest rooms and suites combine luxury living with the comforts of home.

- Complimentary Wi-Fi
- Plenty of data and power ports
- In-room safes
- HDTV with streaming
- Walkout balconies
- Pillow-top mattress and premium bed linens
- Bottled water
- In-room refrigerators





 **MEETINGS**

■ ■ Chicago's Premier Conference Center

We take pride in our 37,000 square feet of versatile IACC-certified function space, engineered to inspire collaboration and action.

■ ■ “If I had to hand-pick a team that consistently made me look good, I would choose the staff at Eaglewood. Their genuineness, sense of urgency and kindness make the property work like a well-oiled machine.”

-GRAPHIC PACKAGING INTERNATIONAL





The Eaglewood Conference Package

Everything you need to run an effective, motivating and on-budget event with no surprises.

One Price Per Person

A one-price-per-person package tailored to your specific objectives by our conference professionals. Whether it's a one-day seminar or a week-long training, these packages take the guesswork out of planning and budgeting.

FULL PACKAGE

Eaglewood Conference Package (ECP)

MODIFIED PACKAGES

Special Conference Package (SCP)

Excludes dinner

Day Conference Package (DCP)

Excludes dinner and guest rooms

FULL PACKAGE INCLUDES

- Overnight accommodations with walkout balconies and Wi-Fi
- Three seasonally crafted meals, beginning with dinner on the day of your arrival and ending with lunch on your departure day
- Continuously replenished refreshment break kiosks from 7 a.m. to 5 p.m. offering a variety of unlimited beverages and snacks
- Conference room set to your specifications with leather, ergonomic chairs, non-glare tables and meeting amenities
- Wi-Fi throughout conference center
- A seasoned conference planning manager to assist in all aspects of designing your event
- Audio Visual Package provided by our in-house A/V team
- Convenient business center (computers, printing, shipping, etc.)



← **Trillium Amphitheatre** *(seats 75)*

Acoustically-focused venue equipped with individual computer interfaces.

- Projection Booth
- Built in Screen and LCD Projector
- Additional seating for 15 people

Linden Ballroom *(seats 252)* →

2,774 sq ft for medium sized meetings and floor-to-ceiling windows with blackout curtains.

- Divides into two sections
- 14' ceiling height



← **Kegler's Lounge**

Soft furniture breakout room adjacent to Kegler's Bowling + Bar

← **Executive Conference Rooms**

*11 rooms between 600-1038 sq ft,
17 rooms between 260-441 sq ft*

Intimate settings with leather chairs, tackable and soundproof walls, fully-equipped with a meeting planner tool kit. All rooms feature natural light and a 10' ceiling height.



↑ **Red Oak Ballroom**

7,031 sq ft for large scale meetings and elegant events, separate entrance, large pre-function space and outdoor terrace.



← **Red Oak Ballroom Foyer**

2,354 square feet of Frank Lloyd Wright-inspired decor, magnificent 24' tall ceilings and a separate entrance easily accessible to the parking lot.

Wisteria Terrace (seats 80) →

2,090 sq ft second floor open air terrace overlooks scenic fairways. Ideal for food & beverage events, teambuilding activities or as a pop-up breakout room.



Boardroom (seats 16) →

- Executive-style permanent board table
- 46" Monitor and Built in White Board
- Natural lighting with sliding blackout panels



← **Refreshment Break Kiosks**

- Two stations strategically located on each floor
- Serviced continuously from 7 a.m. – 5 p.m.
- Rotational selection daily

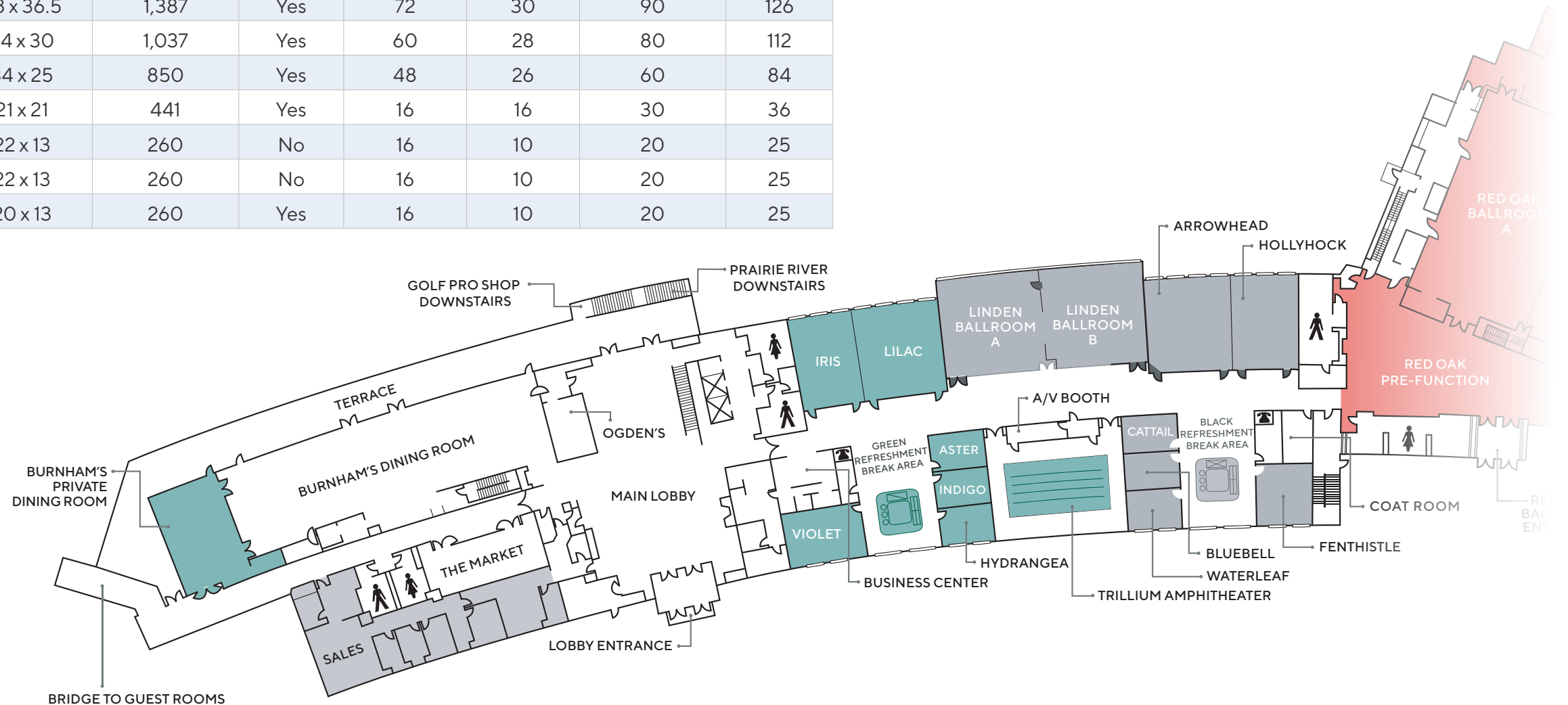


↑ **The Pavilion** (seats 400)

6,480 sq ft versatile tent is heated and air-conditioned with floor-to-ceiling glass windows to enjoy the scenic views of nature.

Main Level

Room Name	Dimensions	Square Feet	Windows	Classroom	U-Shape	72-inch Round	Theatre
TRILLIUM AMPHITHEATRE	35 x 50	1,750	No	75	N/A	N/A	75
LILAC	34 x 30	1,020	Yes	60	28	80	112
IRIS	34 x 22.5	765	Yes	44	24	50	80
VIOLET	30 x 20	600	Yes	30	20	40	60
ASTER	22 x 13	286	No	16	10	20	25
INDIGO	20 x 13	260	No	16	10	20	25
HYDRANGEA	20 x 13	260	Yes	16	10	20	25
LINDEN BALLROOM A & B	76 x 36.5	2,774	Yes	144	58	180	252
LINDEN BALLROOM A	38 x 36.5	1,387	Yes	72	30	90	126
LINDEN BALLROOM B	38 x 36.5	1,387	Yes	72	30	90	126
ARROWHEAD	34 x 30	1,037	Yes	60	28	80	112
HOLLYHOCK	34 x 25	850	Yes	48	26	60	84
FENTHISTLE	21 x 21	441	Yes	16	16	30	36
CATTAIL	22 x 13	260	No	16	10	20	25
BLUEBELL	22 x 13	260	No	16	10	20	25
WATERLEAF	20 x 13	260	Yes	16	10	20	25



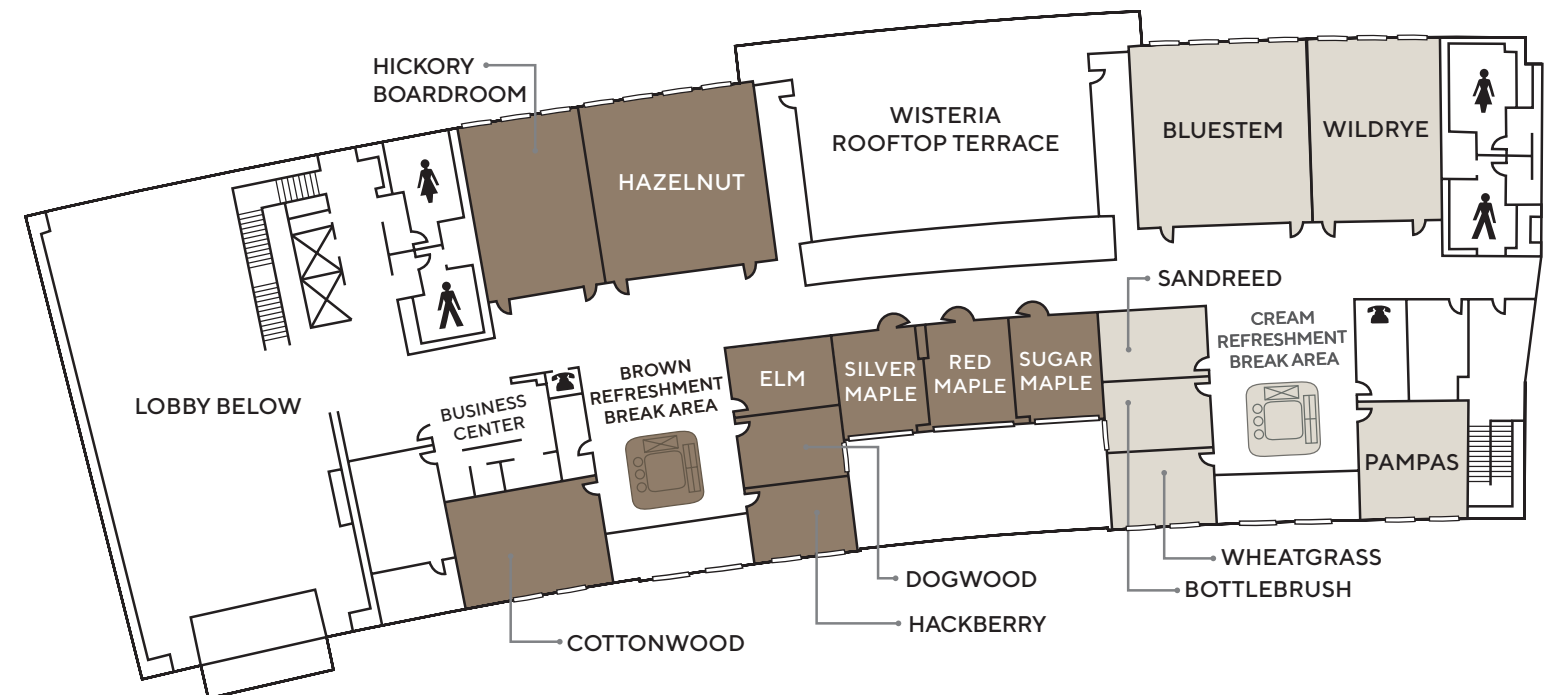
Main Level Cont'd

Room Name	Dimensions	Square Feet	Windows	Classroom	U-Shape	72-inch Round	Theatre
RED OAK BALLROOM (A,B,C)	89 x 79	7,031	Yes	420		490	792
RED OAK BALLROOM A	89 x 40	3,560	Yes	21	68	230	320
RED OAK BALLROOM B	44 x 40	1,760	Yes	96	36	110	180
RED OAK BALLROOM C	44 x 39	1,716	No	96	36	110	180
RED OAK PRE-FUNCTION	107 x 22	2,354	Yes	250 Reception			
RED OAK PATIO	74 x 21	1,554	N/A	200 Reception			
THE PAVILION	60 x 108	6,480	Yes	324		400	644
BURNHAM'S PRIVATE DINING	38 x 26	988	Yes	100 Reception		60	



Upper Level

Room Name	Dimensions	Square Feet	Windows	Classroom	U-Shape	72-inch Round	Theatre
HAZELNUT	34 x 32	1,088	Yes	60	28	80	112
HICKORY BOARDROOM	22 x 34	748	Yes		16 Conference		
COTTONWOOD	30 x 20	600	Yes	30	20	40	60
ELM	20 x 13	260	No	16	10	20	25
DOGWOOD	20 x 13	260	Yes	16	10	20	25
HACKBERRY	20 x 13	260	Yes	16	10	20	25
SILVER MAPLE	20 x 16	320	Yes	16	12	24	30
RED MAPLE	20 x 16	320	Yes	16	12	24	30
SUGAR MAPLE	20 x 16	320	Yes	16	12	24	30
WISTERIA ROOFTOP TERRACE	55 x 38	2,090	N/A	225 Reception		120	
BLUESTEM	34 x 32	1,088	Yes	60	28	80	112
WILDRYE	34 x 25	850	Yes	48	26	60	84
PAMPAS	21 x 21	441	Yes	16	16	30	36
WHEATGRASS	22 x 13	260	No	16	10	20	25
BOTTLEBRUSH	22 x 13	260	No	16	10	20	25
SANDREED	22 x 13	260	No	16	10	20	25





DINING

BURNHAM'S

Enjoy our locally sourced buffet while taking in the scenery through picture windows, or dine al fresco during summer months.

PRAIRIE RIVER

This lively spot features a full-service bar, made-from-scratch American cuisine, plenty of TVs with your favorite sports programming, our Foresight Golf Simulator, and a patio with a fire pit.

THE MARKET

Grab a bite or coffee and connect with colleagues and friends at this convenient cafe located next to the lobby.

OGDEN'S LOBBY BAR

Enjoy small plates and beautifully crafted drinks in an upscale setting or on our outdoor patio while watching the sun set over the golf course.

DIRECTOR OF FOOD & BEVERAGE, GREG ELLIOTT



designed by Charles Maddox

The Golf Club at Eaglewood's compact yet challenging layout provides a memorable experience for all levels of golfers. Three sparkling lakes and 65 contoured bunkers add both challenge and beauty, while 100-year-old oak trees provide some Midwest majesty as a backdrop. The course was designed by Charles Maddox, a third-generation golf course architect, in 1932.

- Private and group lessons
- Golf packages
- Annual passes
- Golf outings

In inclement weather or for more practice, try out our incredible Foresight Golf Simulator. Experience more than 40 of the world's most exclusive golf courses, play in skill-building competitions, and perfect your drives in 4k resolution.

THE GOLF CLUB *at Eaglewood*



EST.
19
32



THE SPA

AT EAGLEWOOD



Let The Spa at Eaglewood be your wellness sanctuary.

Warm and spacious with a contemporary design, the Spa at Eaglewood offers a full suite of treatments.

With calming sounds and aromas enveloping you the moment you enter The Spa, you'll feel the tension roll off your shoulders instantly. Treat your body and mind to the pampering you deserve. Continue your serenity in your own home with luxury spa items available for purchase in our boutique.





 **ACTIVITIES**



In addition to our world-class golf and luxury spa services, Eaglewood offers a variety of fun indoor and outdoor recreational activities.



KEGLER'S BOWLING ALLEY + BAR

Reserve this six-lane cosmic bowling alley decked out with auto-scoring, billiards, flat screen HDTV, juke box, and outdoor deck.

INDOOR POOL

Our skylighted pool is airy and bright all times of year. The pool area features indoor and outdoor sun decks, a sauna, steam room, and whirlpool.

FITNESS CENTER

Enjoy three studios—a cardio room, a group fitness room, and a free weight room—featuring all the equipment you could want for a satisfying workout.

BOCCE BALL + BAG TOSS

Ready for a little low-key friendly competition? Eaglewood has two regulation bocce ball courts and bag toss games.



TEAM BUILDING

Eaglewood Resort & Spa is ideal for corporate or community team-building experiences. Thrill your team with fun activities designed to build confidence, trust, and communication. These dynamics are key to strengthening group creativity and productivity.



ON-SITE ACTIVITIES

- Night golf and putting
- Foresight Golf Simulator
- Wacky bowling
- Charity team building
- Guacamole challenge
- Iron bartender
- Interactive team building
- Morning Zumba
- Scavenger hunt
- Bocce ball

OFF-SITE ACTIVITIES

- Mastermind Escape Rooms
- Indoor go-cart racing
- Medieval Times
- Minor League baseball
- Lynfred Winery
- Topgolf
- WhirlyBall

A memorable group experience can be a wonderful component to a team-building weekend. Arrange for a competitive day at the go cart track, or grab some beers and hand-crafted pizza between games at our private on-site bowling alley, Kegler's.



CONTACT

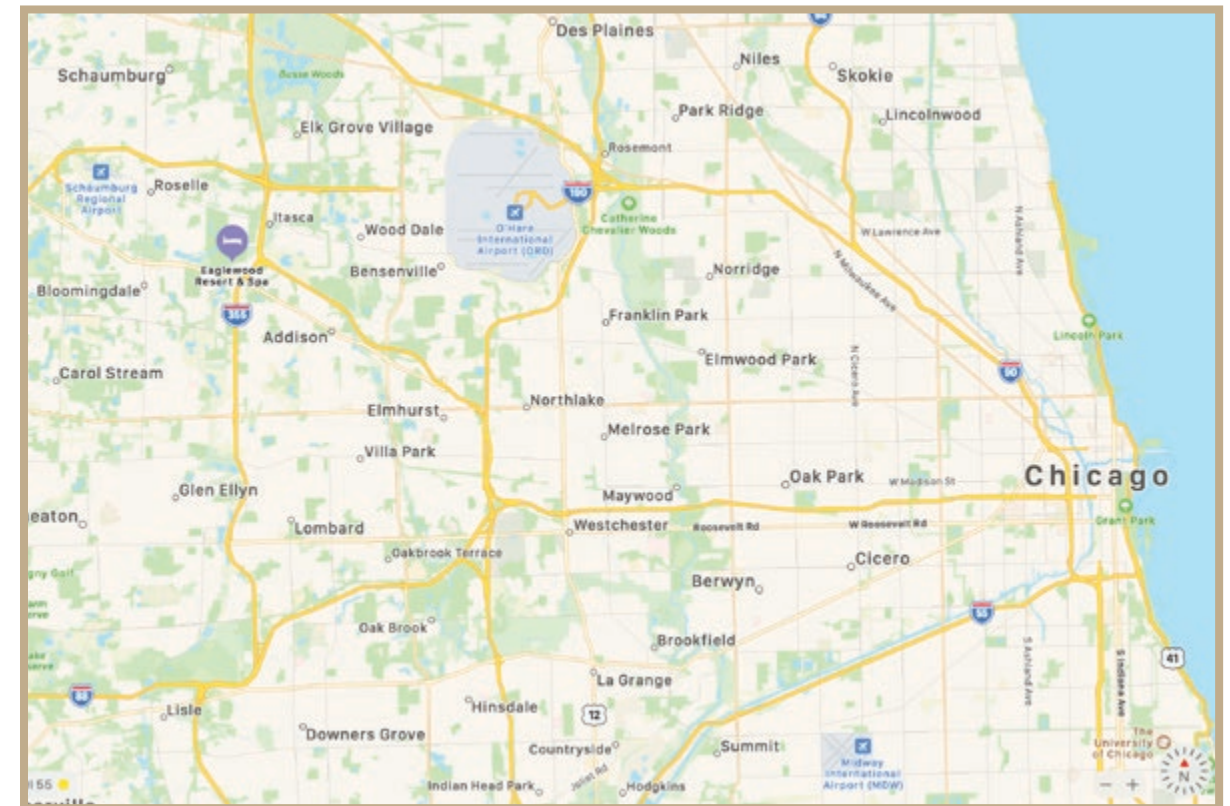
GROUP SALES

sales@eaglewoodresort.com

630-694-5910

VISIT WEBSITE →

REQUEST FOR PROPOSAL →



1401 NORDIC RD ITASCA, IL 60143